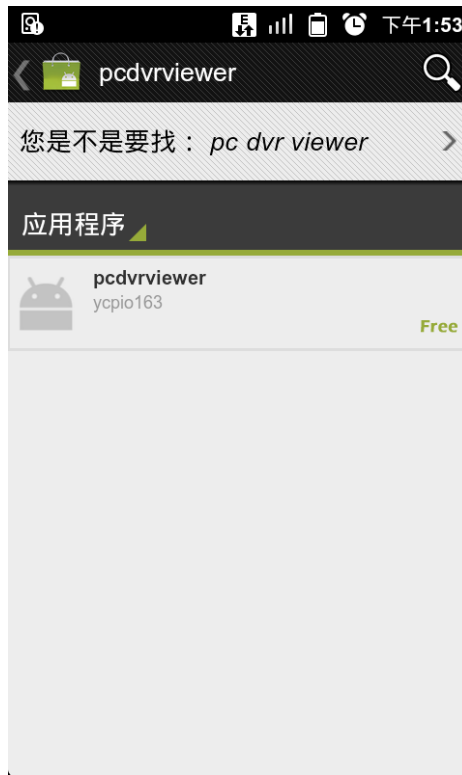
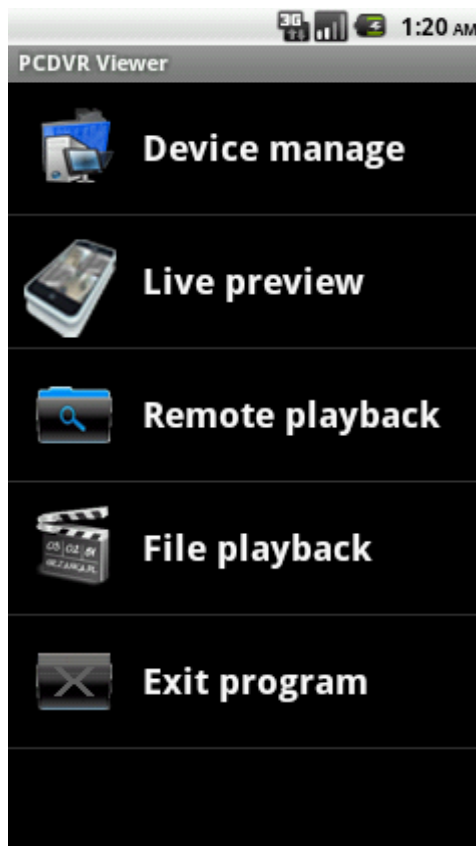


PCDVRViewer User Guide for Android Devices

Open your browser of your Android Phone, enter Android Market, Search for "PCDVRViewer", you will get the following result if the program matches your phone:



Download and install the program, run it, you will see the main interface showed as below:



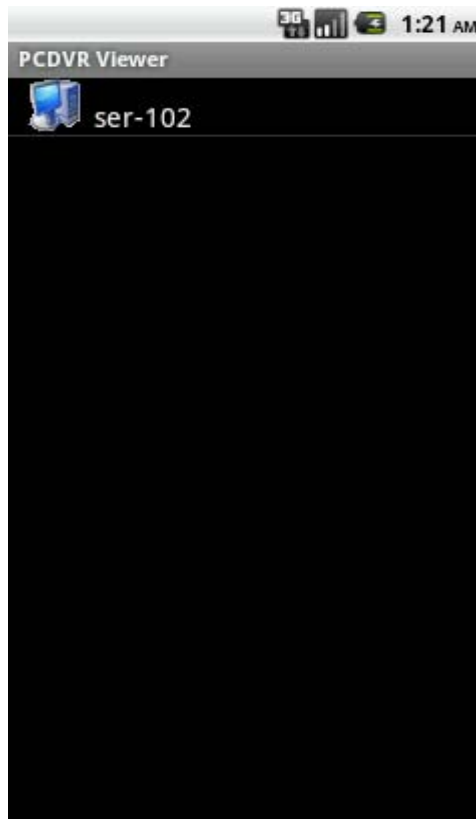
Click "Device Manage" in main interface, you will enter Device Manage interface, it is a black screen by default since there is no device added.



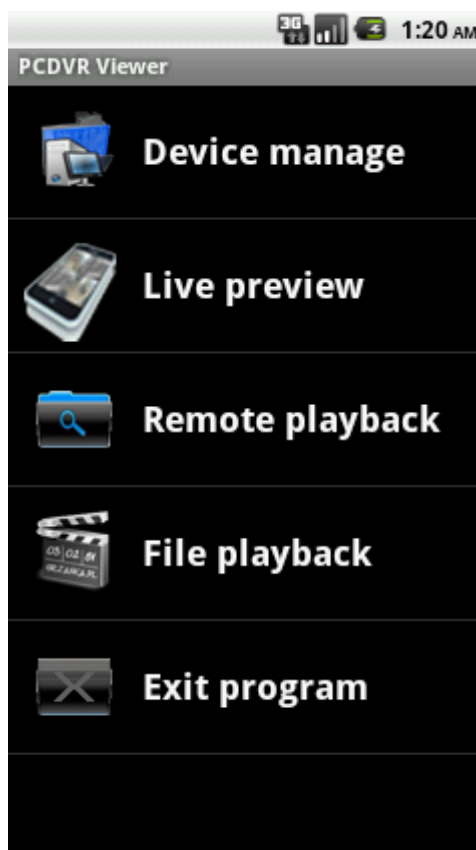
Here click "MENU" button on your phone and press "add" button to start adding device, the interface is as below:



Here you have to enter the Device Name, IP address, Port(Please note that new program use the Data Port **5100** to connect), User name and Password, then click "add" button to finish adding.



When you finished adding device, return to the main interface to do other operation.



Select "Live Preview" in main interface, you will enter the following interface.



Select a window here, click "play" button, you will go into Device list, showed as below:



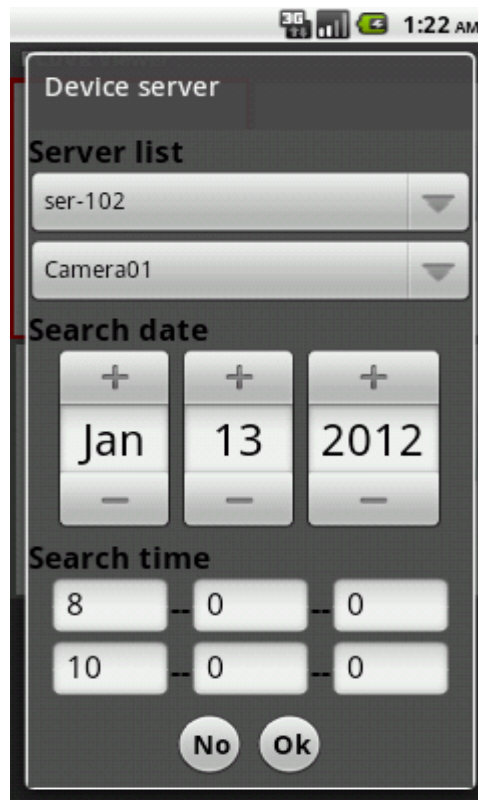
Click a device, cameras of this device will be listed out, click a camera, it will be played in your selected window.



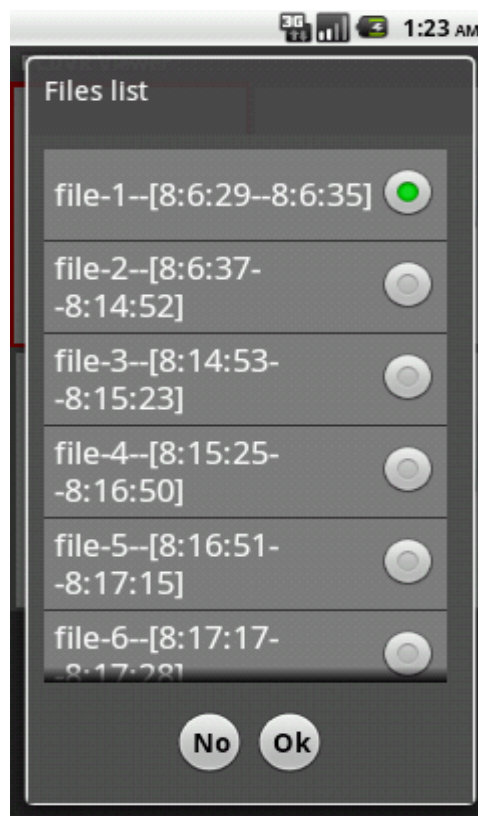
Return to the main interface and select "Remote Playback", you will enter the following interface:



Select a window and click "play" button, you will see the following interface:



Here you have to select Server/Camera/Date/Time and click "ok" button, then matched files will be list as below:



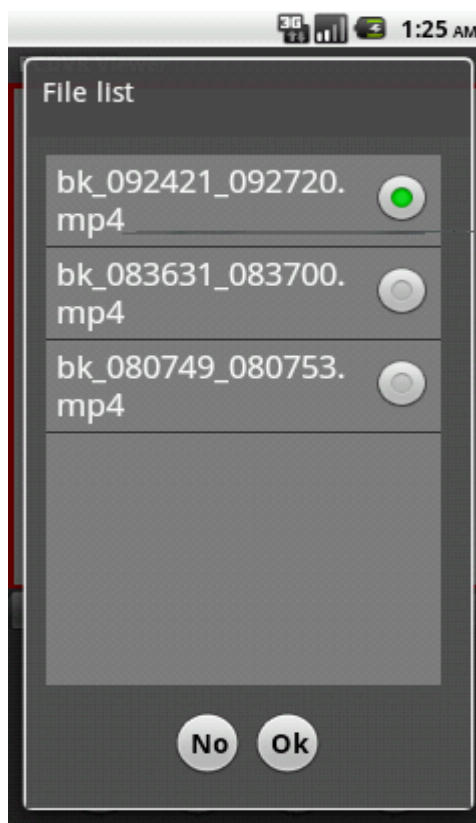
Click on a file here, the file will be played in the window you selected in main interface.



Select "File Playback" in main interface to play local backed up files, showed as below:



Click "open" button, the files backed up while remote playback will be listed as below:



Select a file and click "ok" button to play it.

